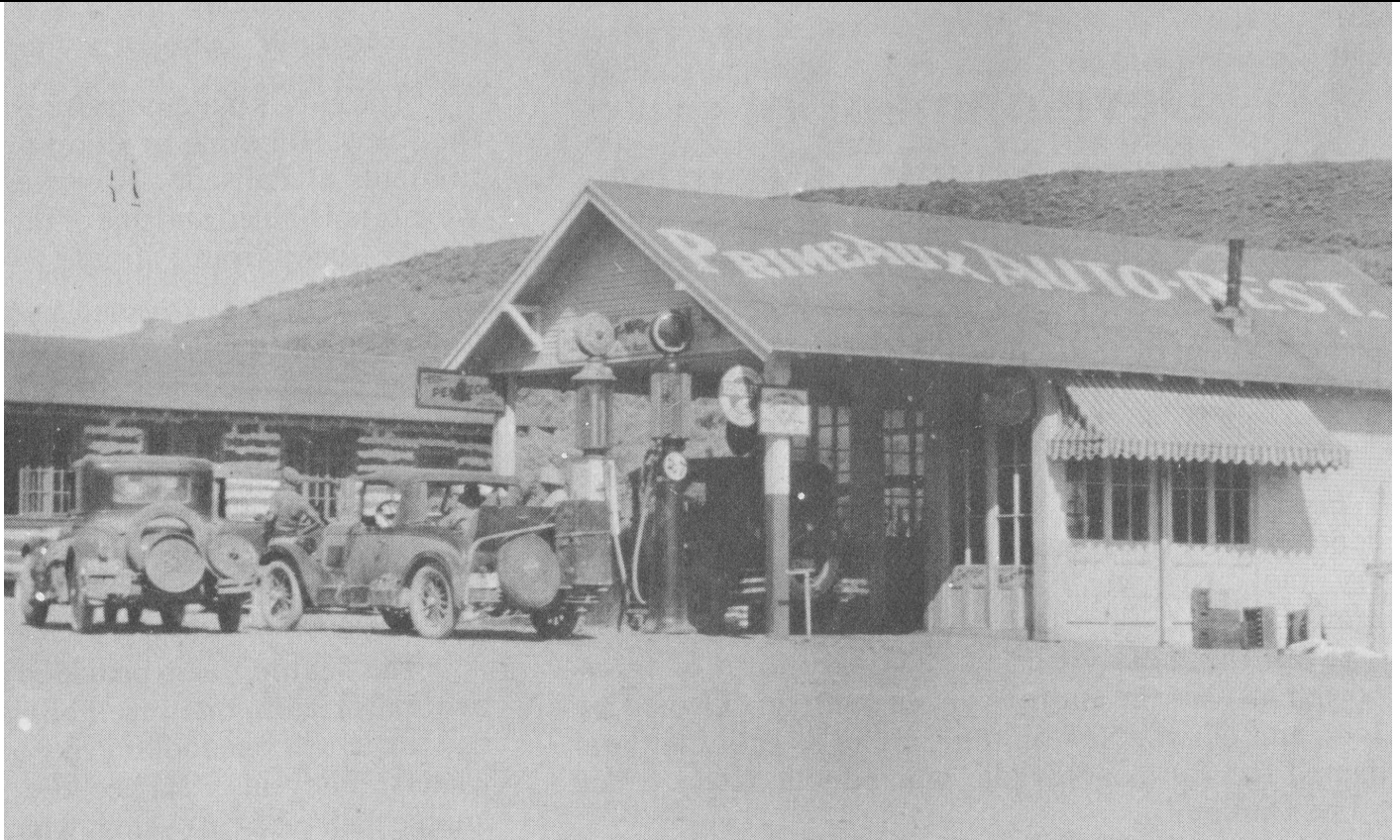


DESERT DUST

Carlin Historical Society - Carlin, Nevada



ABOVE: Primeaux Station on July 20, 1928. In the background, sits the "Lodge" which may have been used as a eating house in the early days of the Station

Primeaux Station

WRITTEN BY ELLA B. TRUJILLO

Starting in the 1870s, the Primeaux Family established and ran a mercantile store and freight business in Tuscarora. With the declining minding industry, Roy L. Primeaux realized Tuscarora was dying and began to look to the future and new possibilities. He found one after the creation of the automobile and its use on new roads that began to appear through the Nevada desert, including the Victory Highway. In 1926, he bought land on the newly begun highway at Emigrant Pass and began work on what the Reno Evening Gazette called a "tourist camp".

It would become an oasis in the desert (not to mention a respite when passing over the rather steep inclines of the pass). Mr. Primeaux built a service station, tourist cabins, and a home. However, people often mistake the animal zoo that was once located at Emigrant with the Station. It was not part of the Primeaux family holdings but is a story for another day. Primeaux Station was a regular stop for the Greyhound Bus Line from its construction in 1926 until the late 1950s.

The interior of the Station included not only interesting items related to the history of the Chinese of Tuscarora but also the musical instruments from the Tuscarora Excelsior Band, sleigh bells, auto horns, and other curiosities. Mr. Primeaux, who always dressed appropriately to provide service to customers (he is on the far left in the photo on the right and leaning on the counter in the picture below), would also share stories of the past with his visitors. One article said travelers "were always welcome and could enjoy Primeaux' warm hospitality".

In 1953, Roy Primeaux suffered a heart attack, sold the station, and the family moved to Winnemucca. He passed in 1969. However, by that point, the Nevada Highway Board owned what remained of the Station and sold all buildings, gas pumps, etc. at auction in 1961. Most of the Primeaux historical collection was donated to the Nevada State Museum.



News and Gossip

**Monthly Meeting - 3rd Tuesday
of each month at 5:30 p.m.**

**Our new exhibit highlighting the history of
Carlin Schools will open on July 4th! Please
plan a visit!**

**VOLUNTEERS ALWAYS NEEDED!
www.carlinhistoricalsociety.com**

